

CBA A-21A LWD RT 500 MD

IDF

Format: VISION Sonic RT MD_1

Vertical Scale: 1:500

Graphics File Created: 22-Mar-2009 15:42

PIP SUMMARY

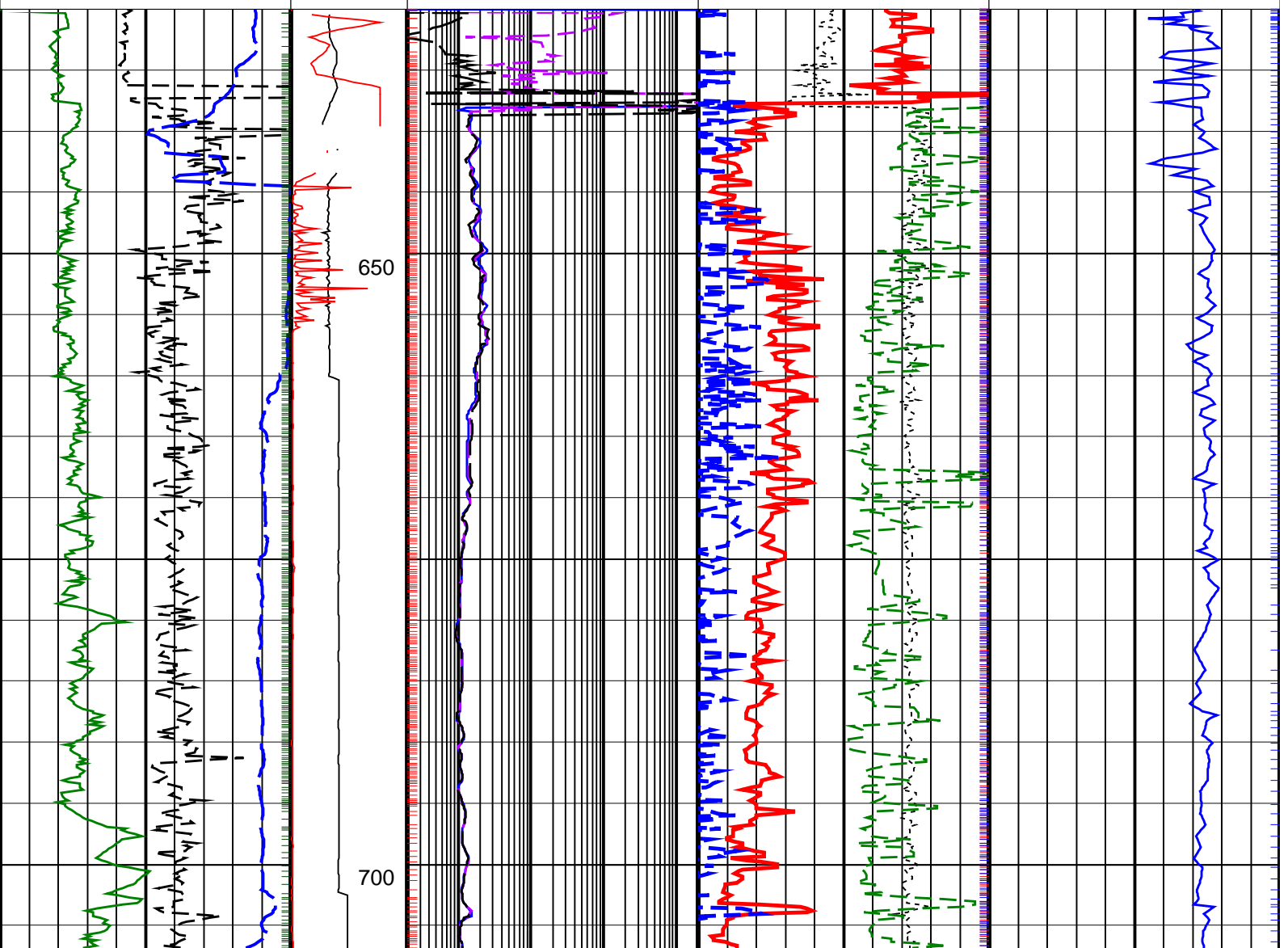
ARC GRAPP PIP

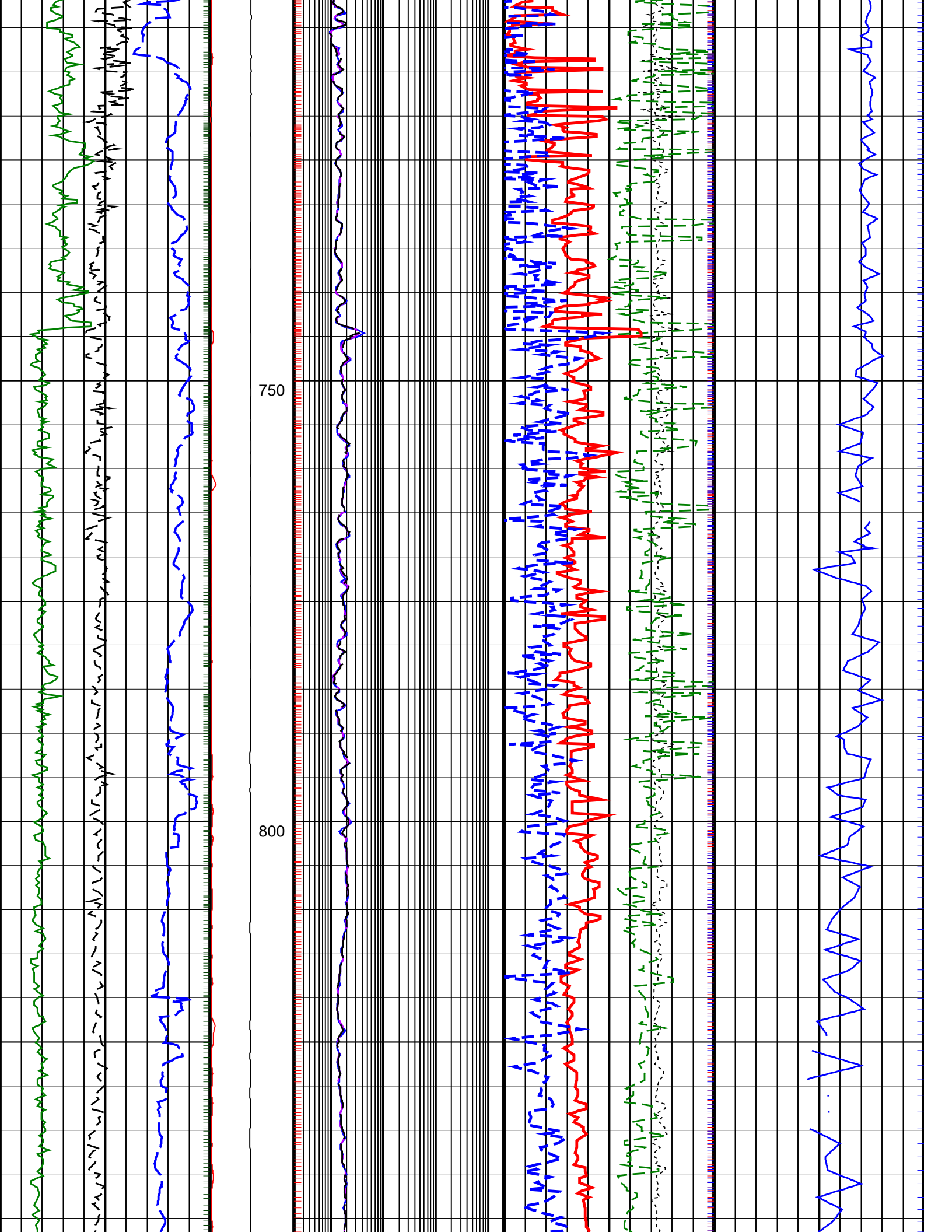
Delta-T Compressional, Real-Time

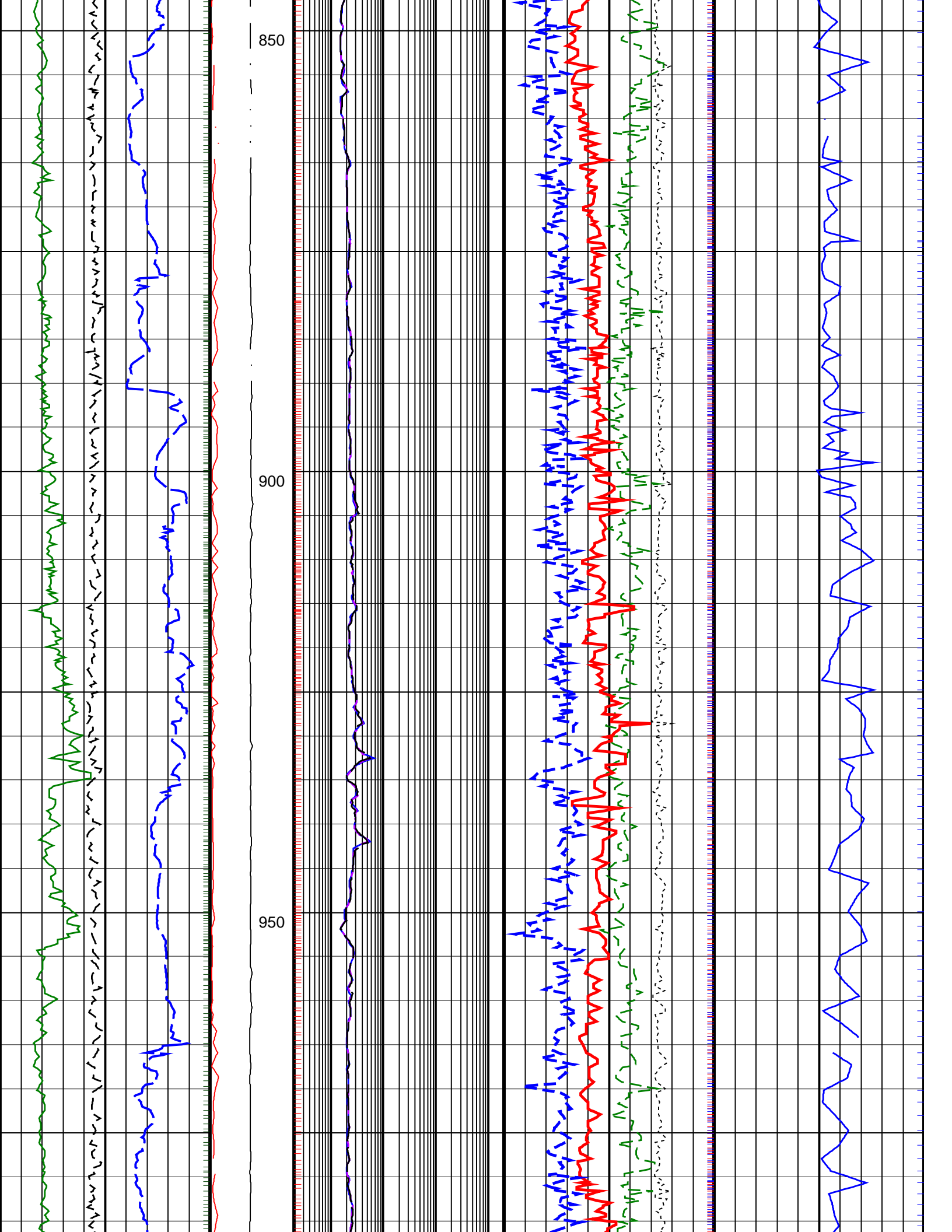
IMP RP16 PIP

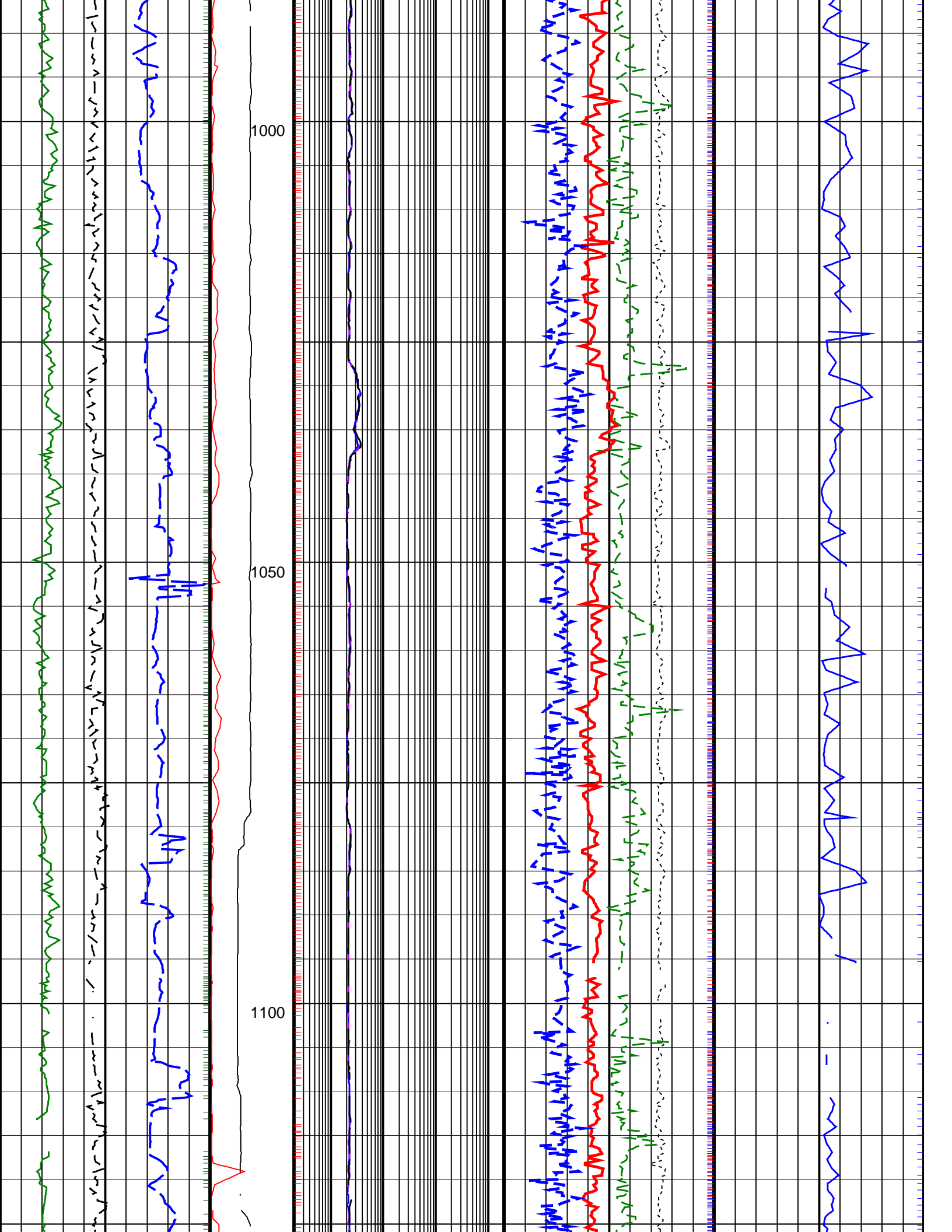
ROBB_A PIP
TNPH_TA PIP

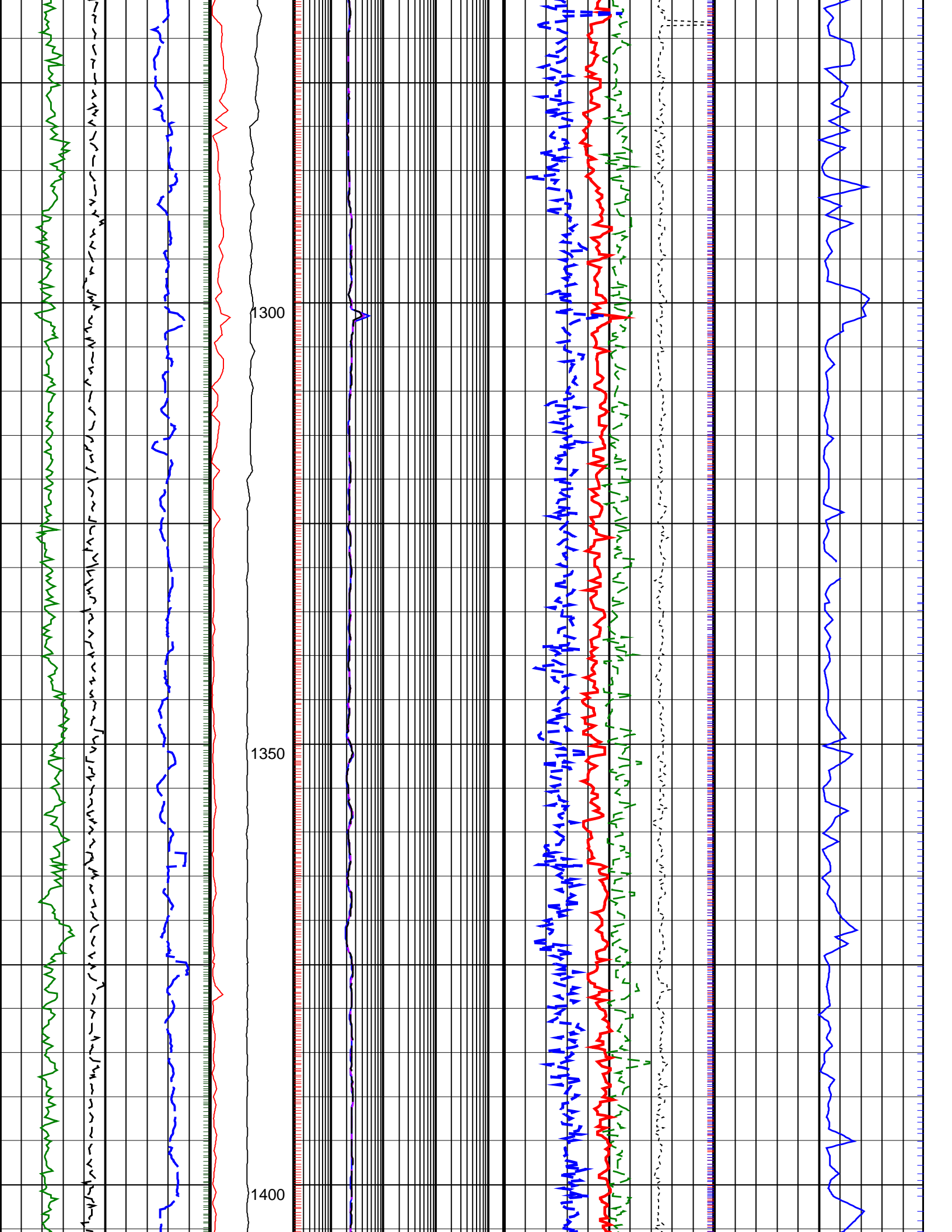
<p>ARC Gamma Ray, Real-Time (ARC_GR_RT)</p> <p>0 (GAPI) 200</p>	<p>ARC BHCorr Phase-Shift Resistivity 40-in. at 2 MHz, Real-Time (P40H_RT)</p> <p>0.2 (OHMM) 2000</p>	<p>Thermal Neutron Porosity, Real-Time (TNPH_ADN_RT)</p> <p>45 (PU) -15</p>	<p>Bulk Density, Bottom, Real-Time Computed Downhole (ROBB_DH_RT)</p> <p>1.85 (G/C3) 2.85</p>	<p>ARC BHCorr Phase-Shift Resistivity 28-in. at 2 MHz, Real-Time (P28H_RT)</p> <p>0.2 (OHMM) 2000</p>	<p>Photoelectric Factor, Bottom, Real-Time (PEB_RT)</p> <p>0 (----) 10</p>
<p>Average Borehole Diameter, Real-Time (ADIA_ADN_RT)</p> <p>6 (IN) 16</p>	<p>MWD Collar RPM (CRPM_RT) (RPM)</p> <p>0 250</p>	<p>ARC BHCorr Phase-Shift Resistivity 16-in. at 2 MHz, Real-Time (P16H_RT)</p> <p>0.2 (OHMM) 2000</p>	<p>Bulk Density Correction, Bottom, Real-Time Computed Downhole (DRHB_DH_RT)</p> <p>-0.75 (G/C3) 0.25</p>	<p>Delta-T Compressional, Real-Time (DTCO_RT)</p> <p>600 (US/M) 100</p>	<p>ROP*5 (ROP5) (M/HR)</p> <p>200 0</p>
<p>PKPK_RPM (Stick_RT) (RPM)</p> <p>0 500</p>					

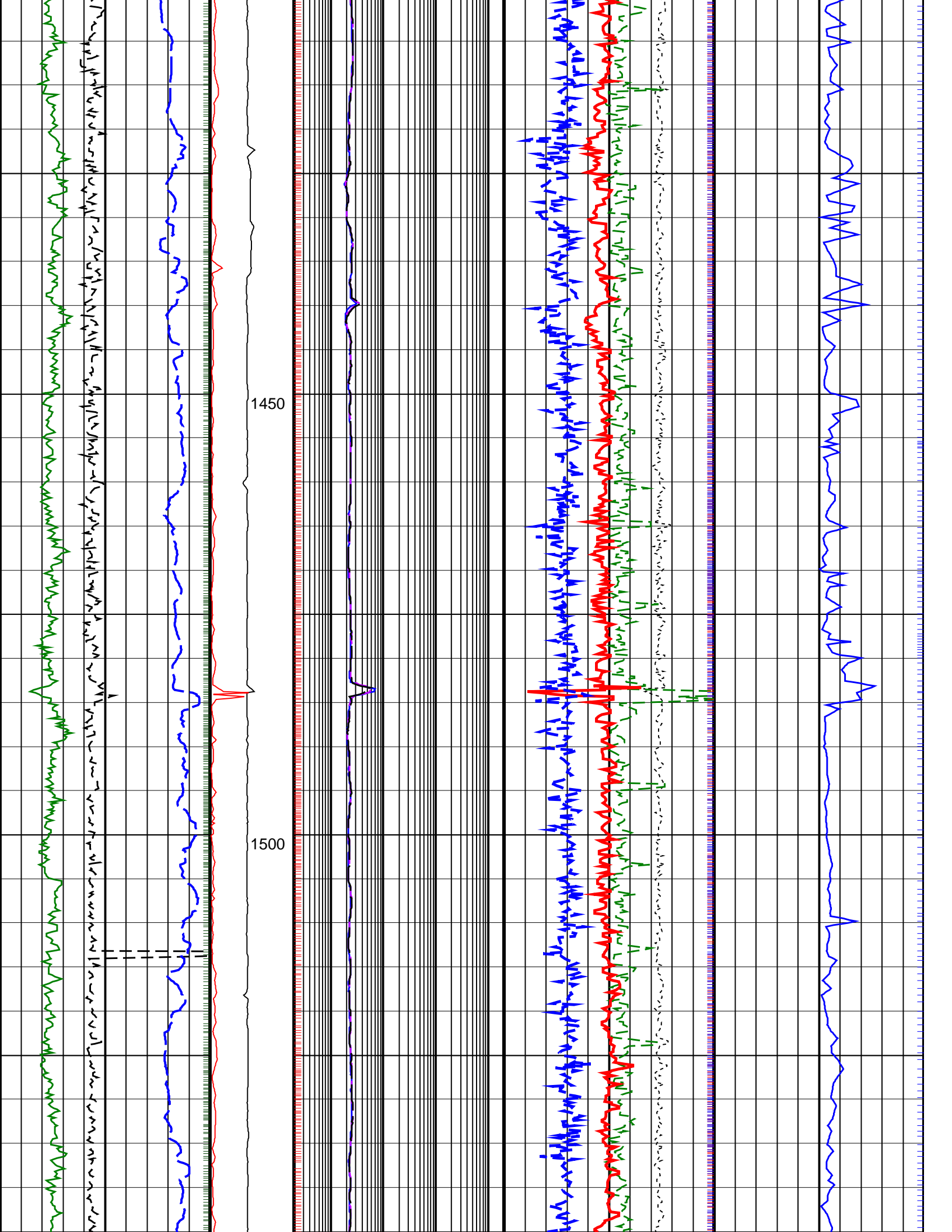


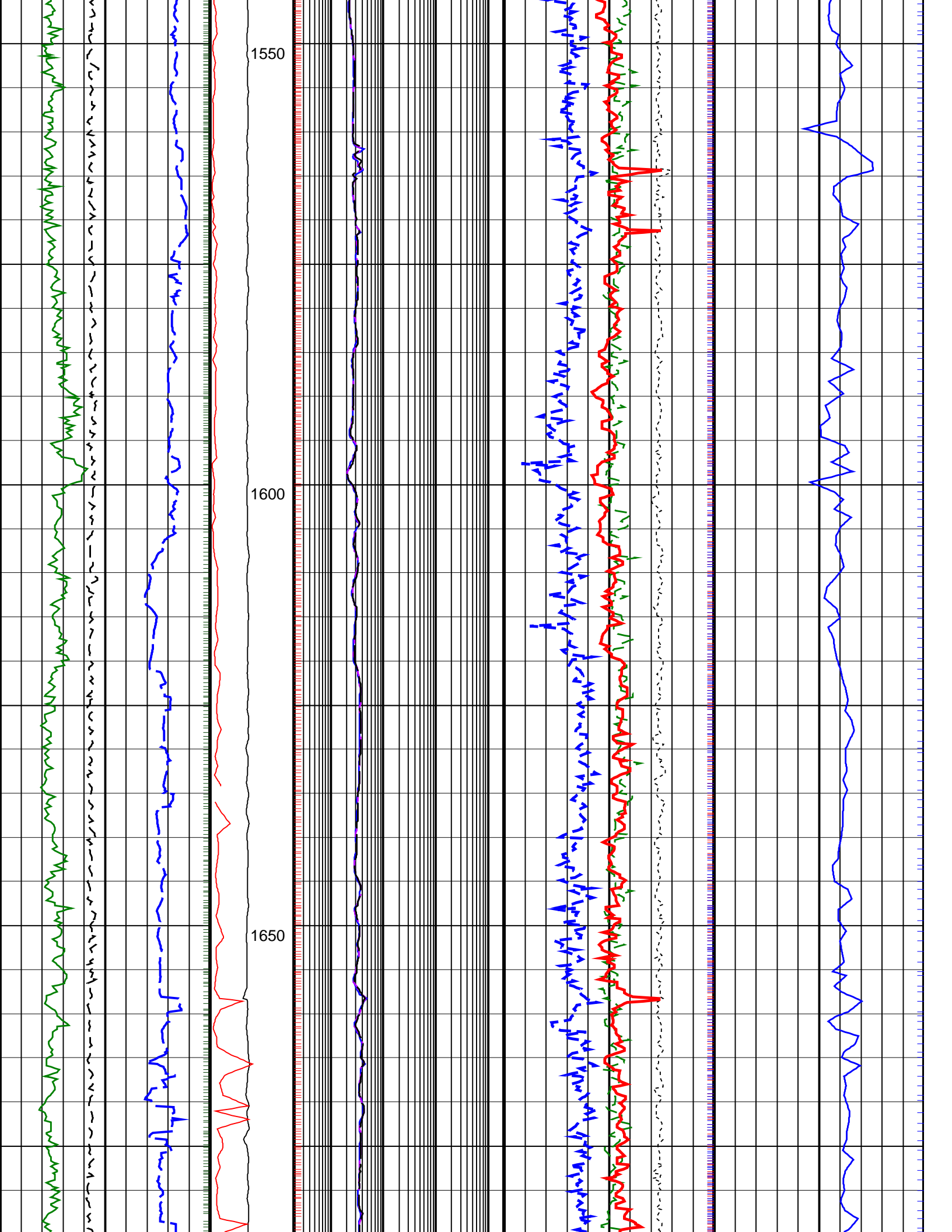


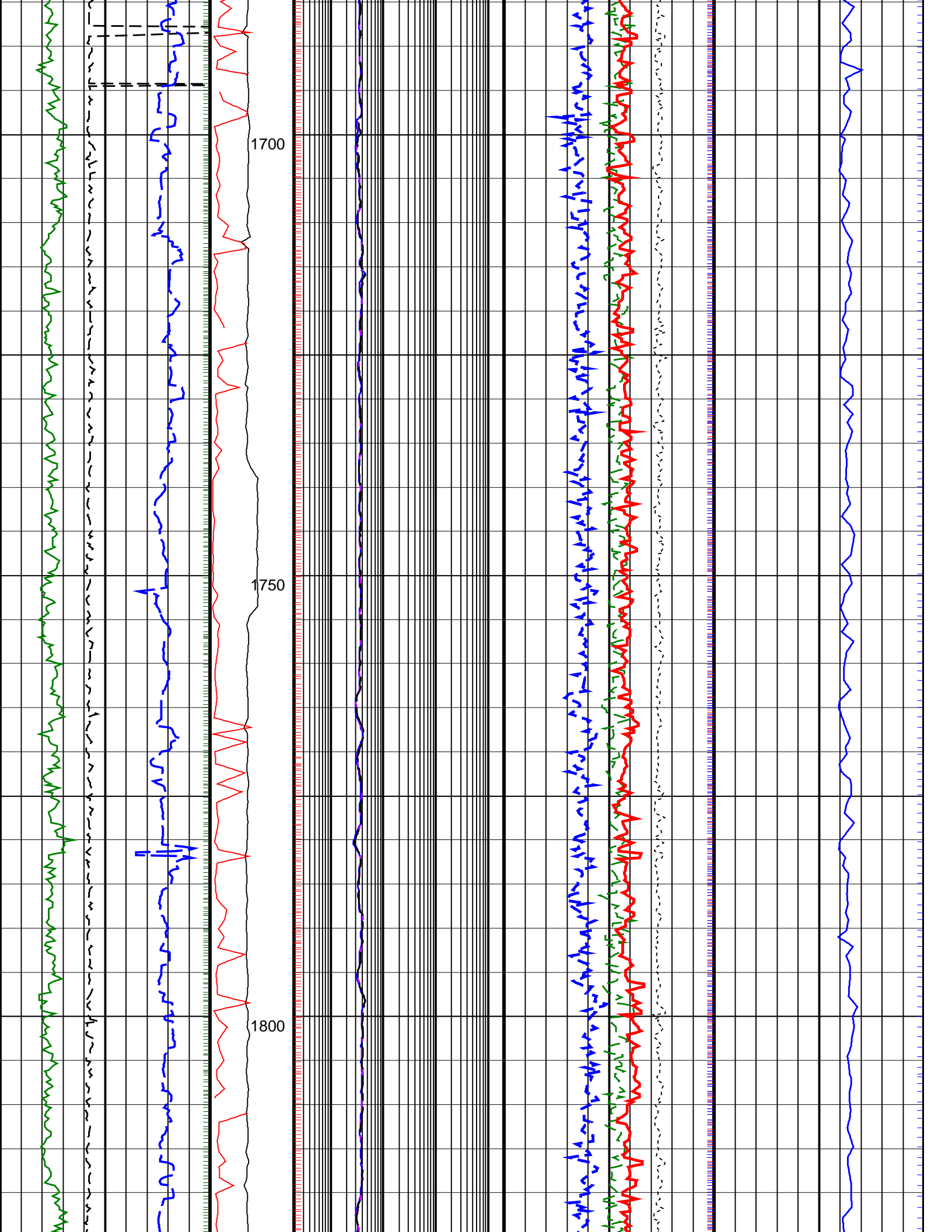


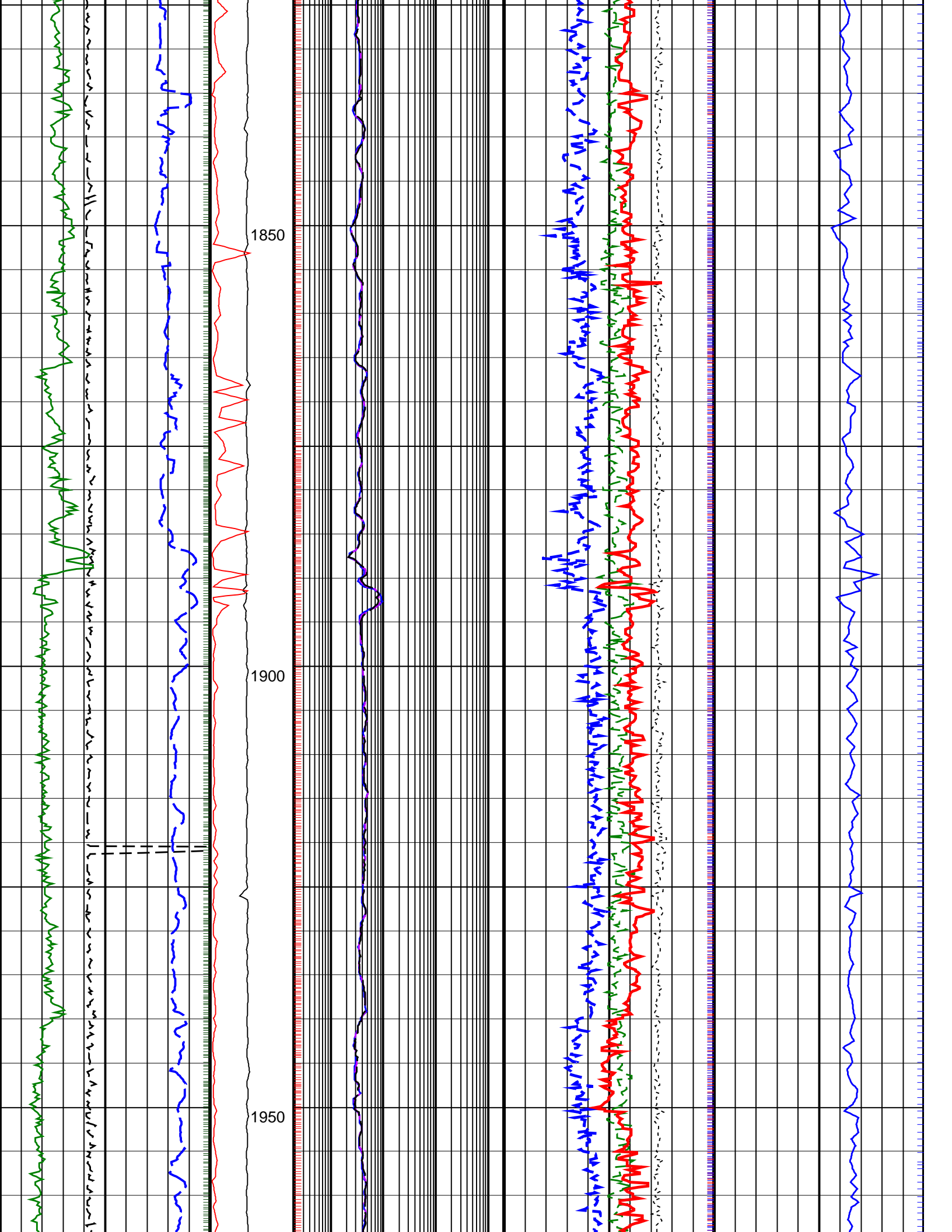


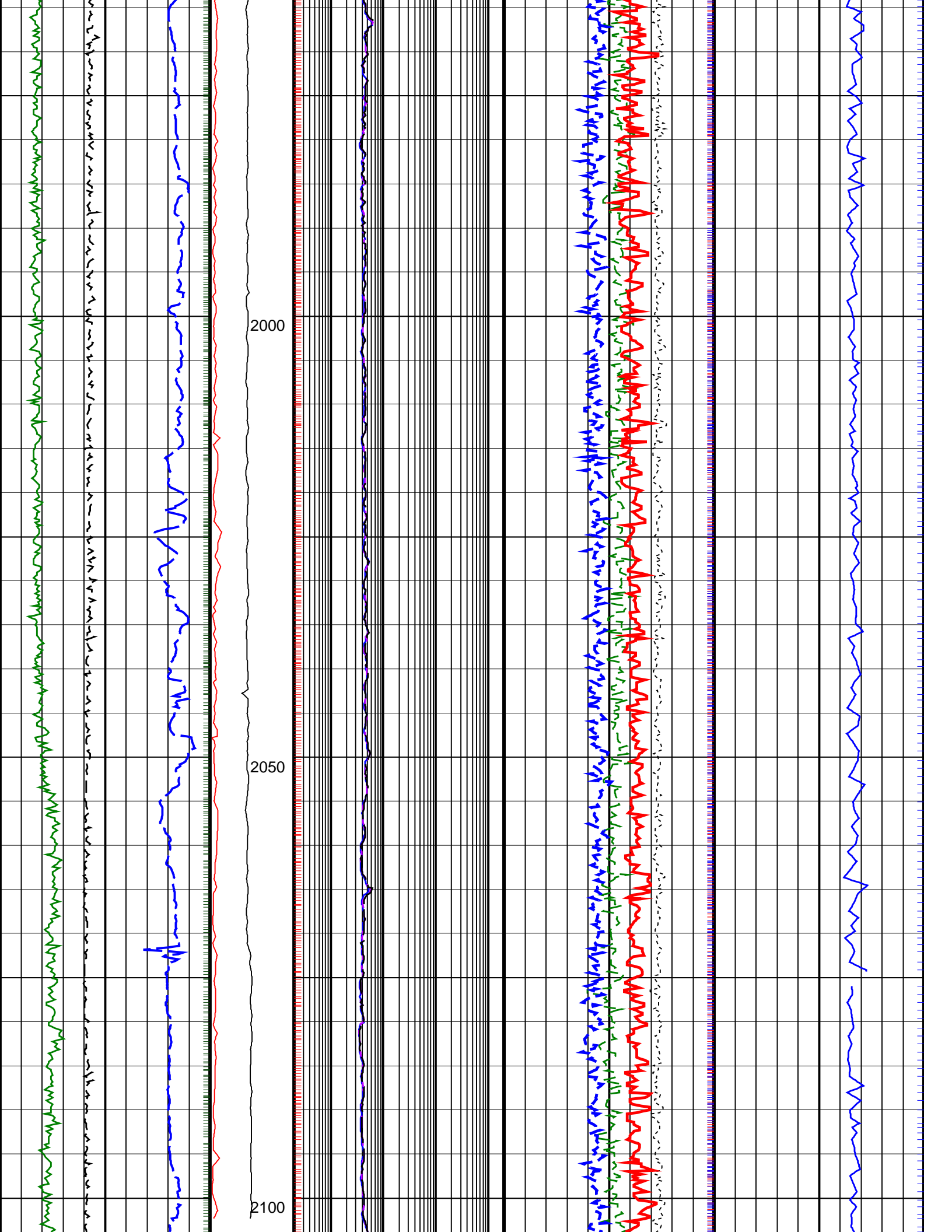


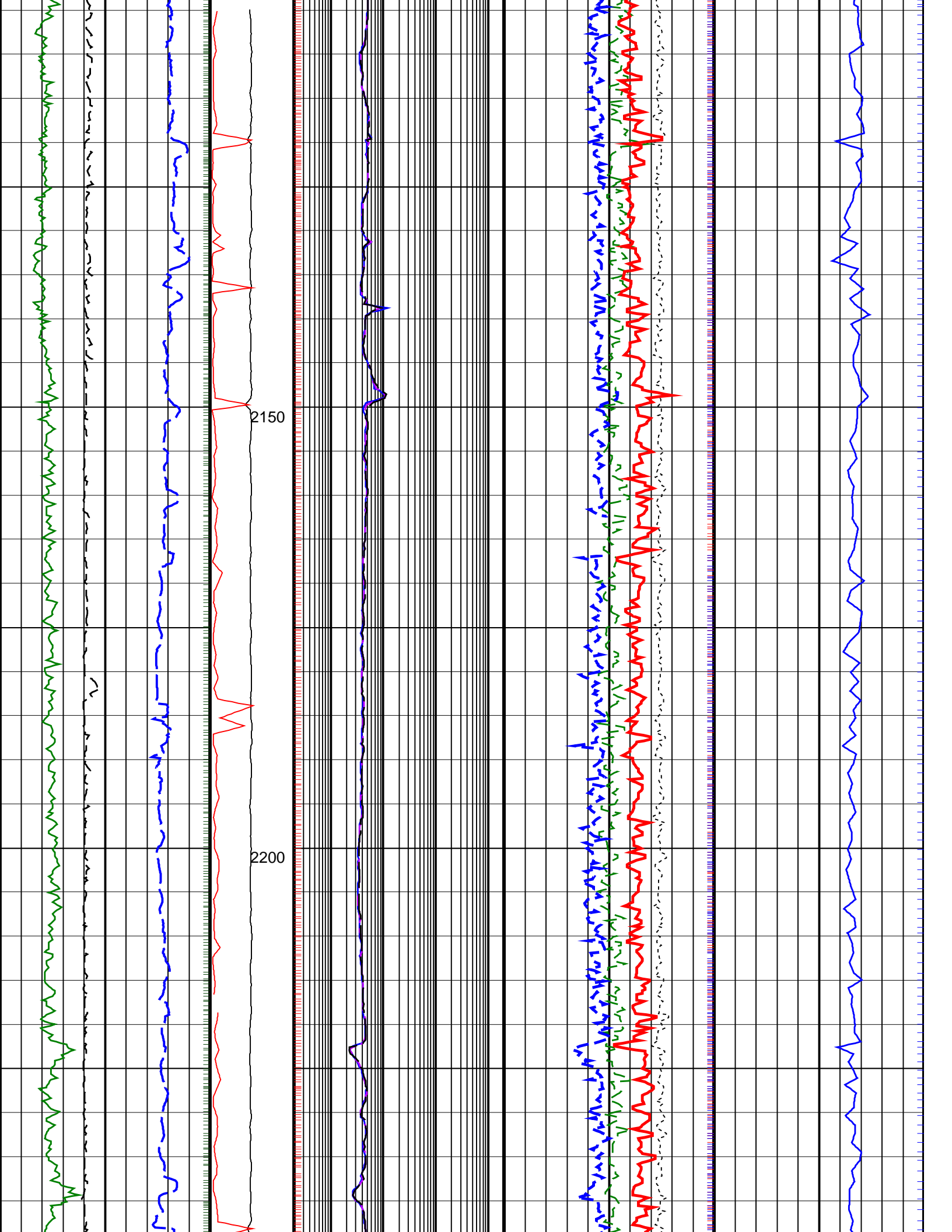


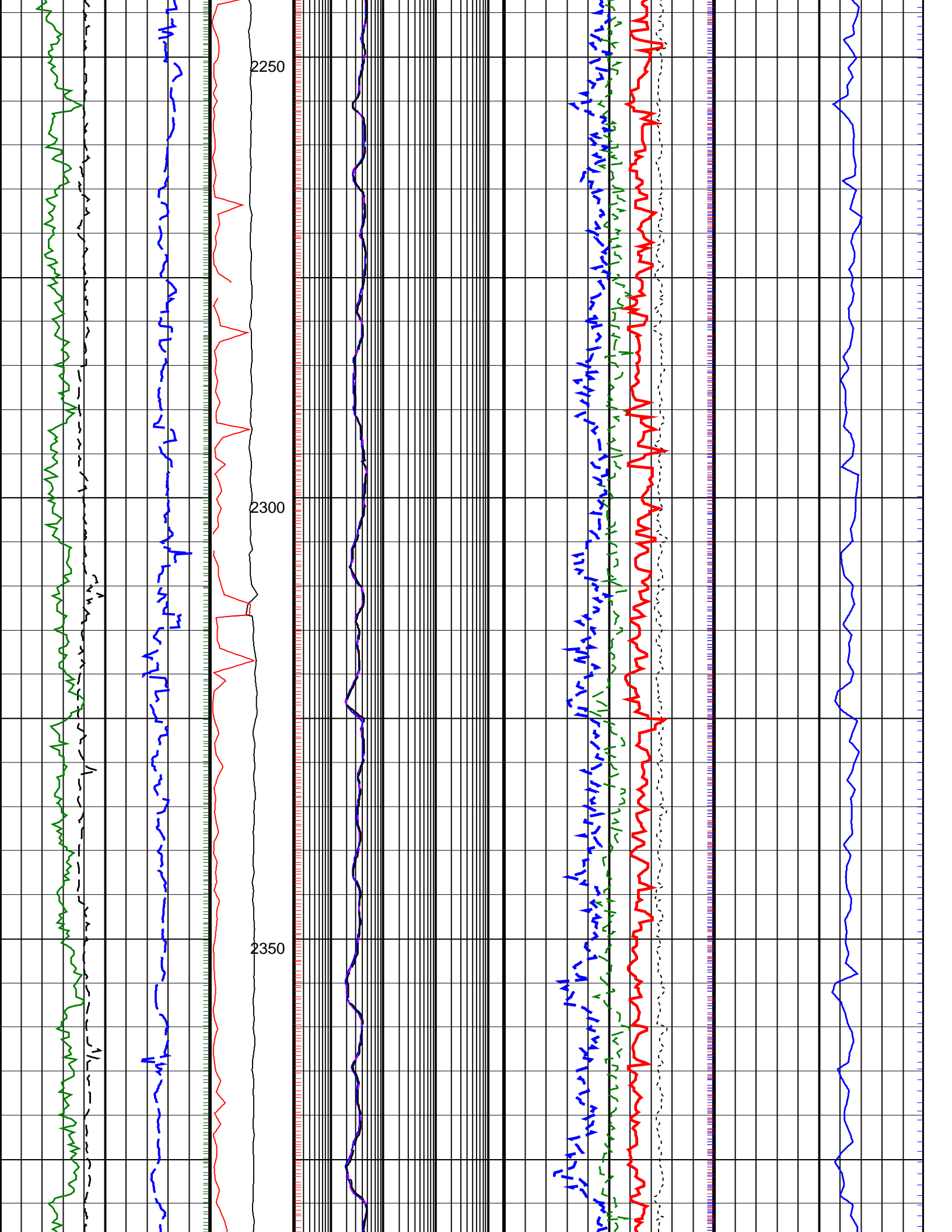


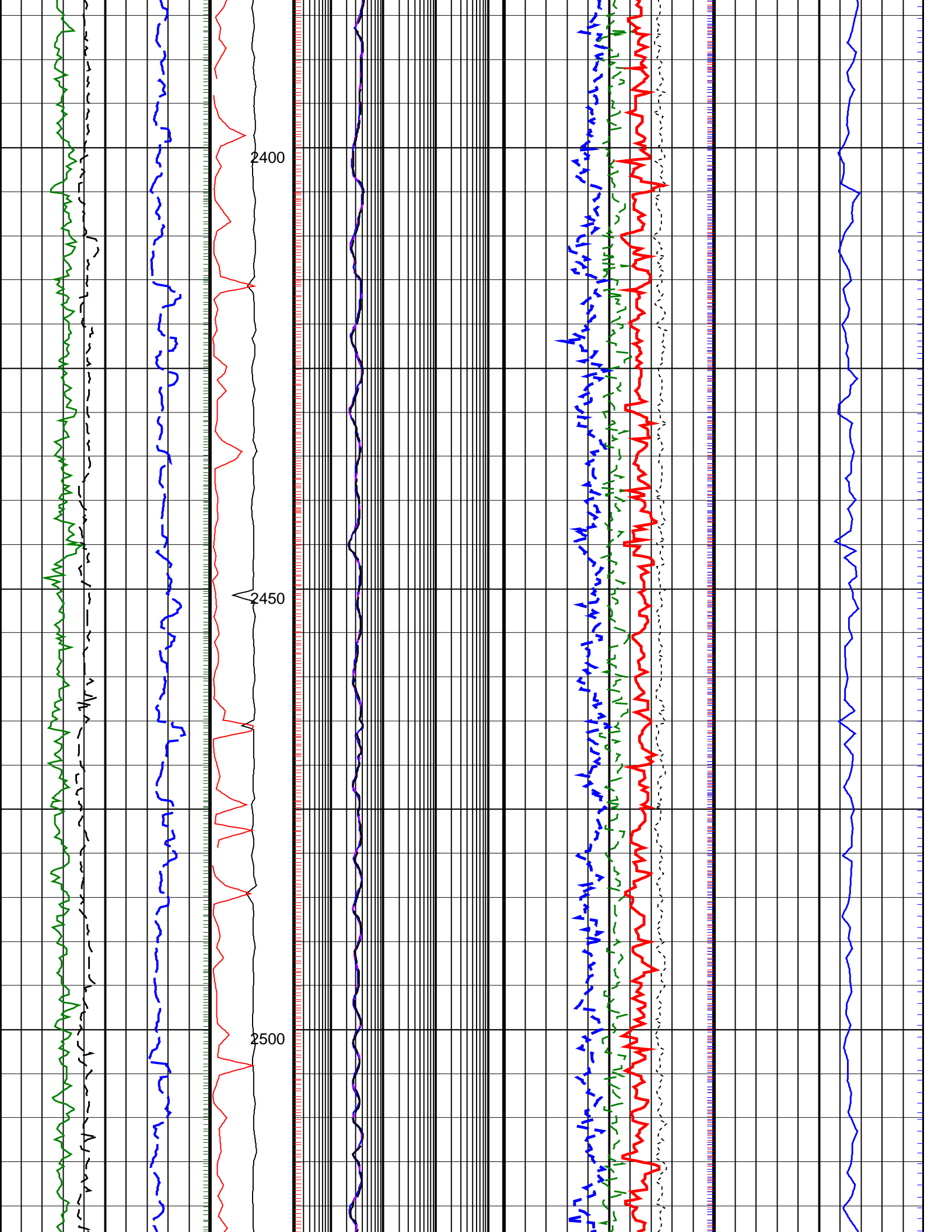


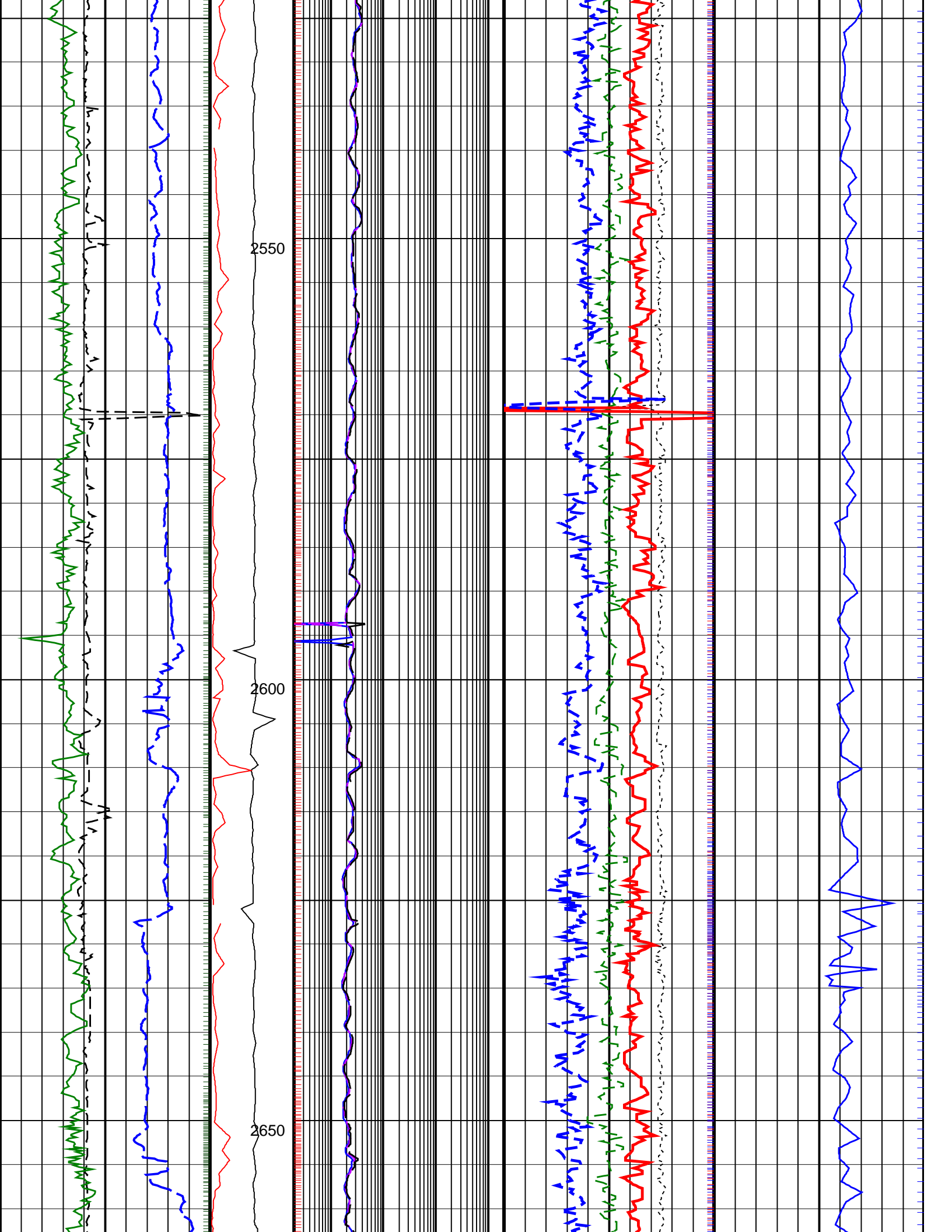


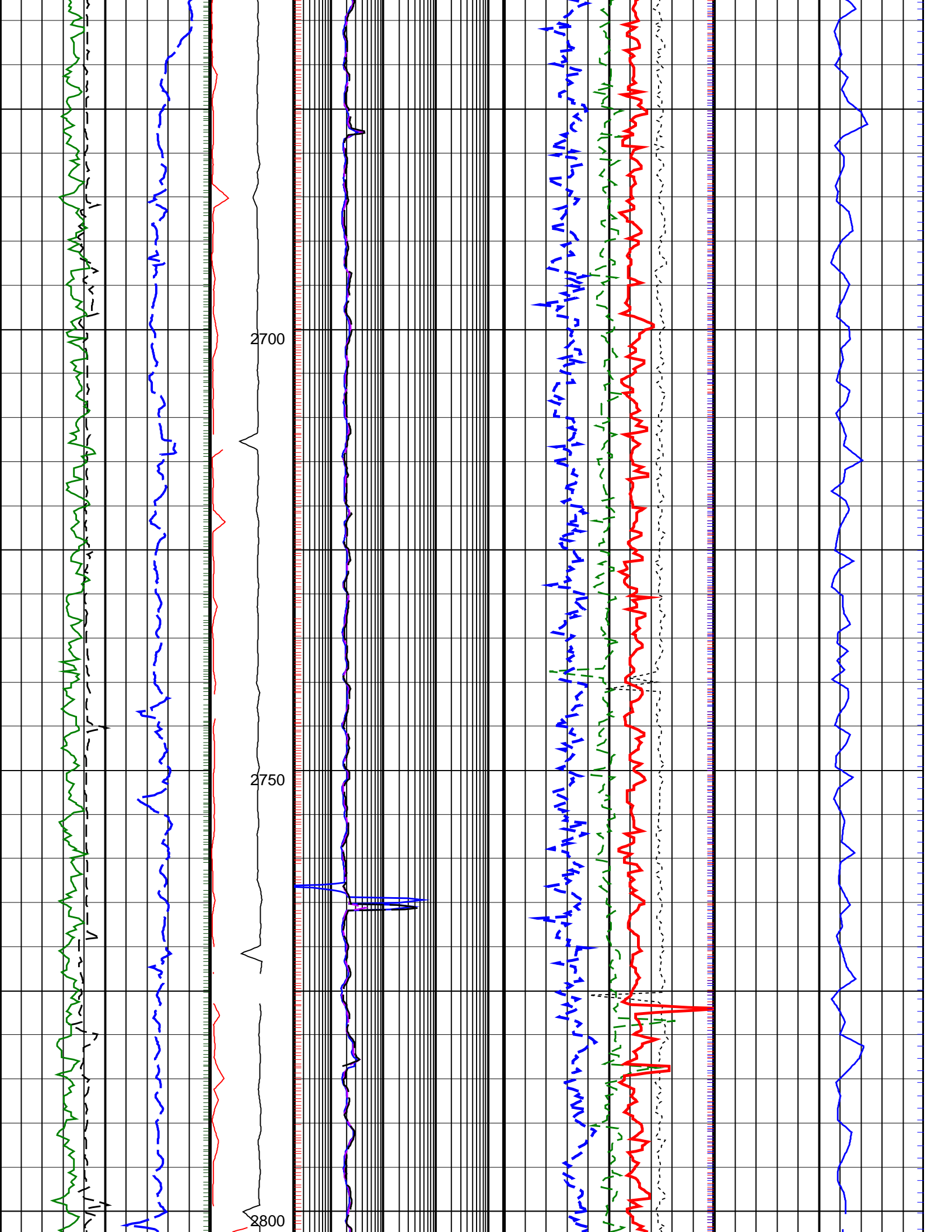


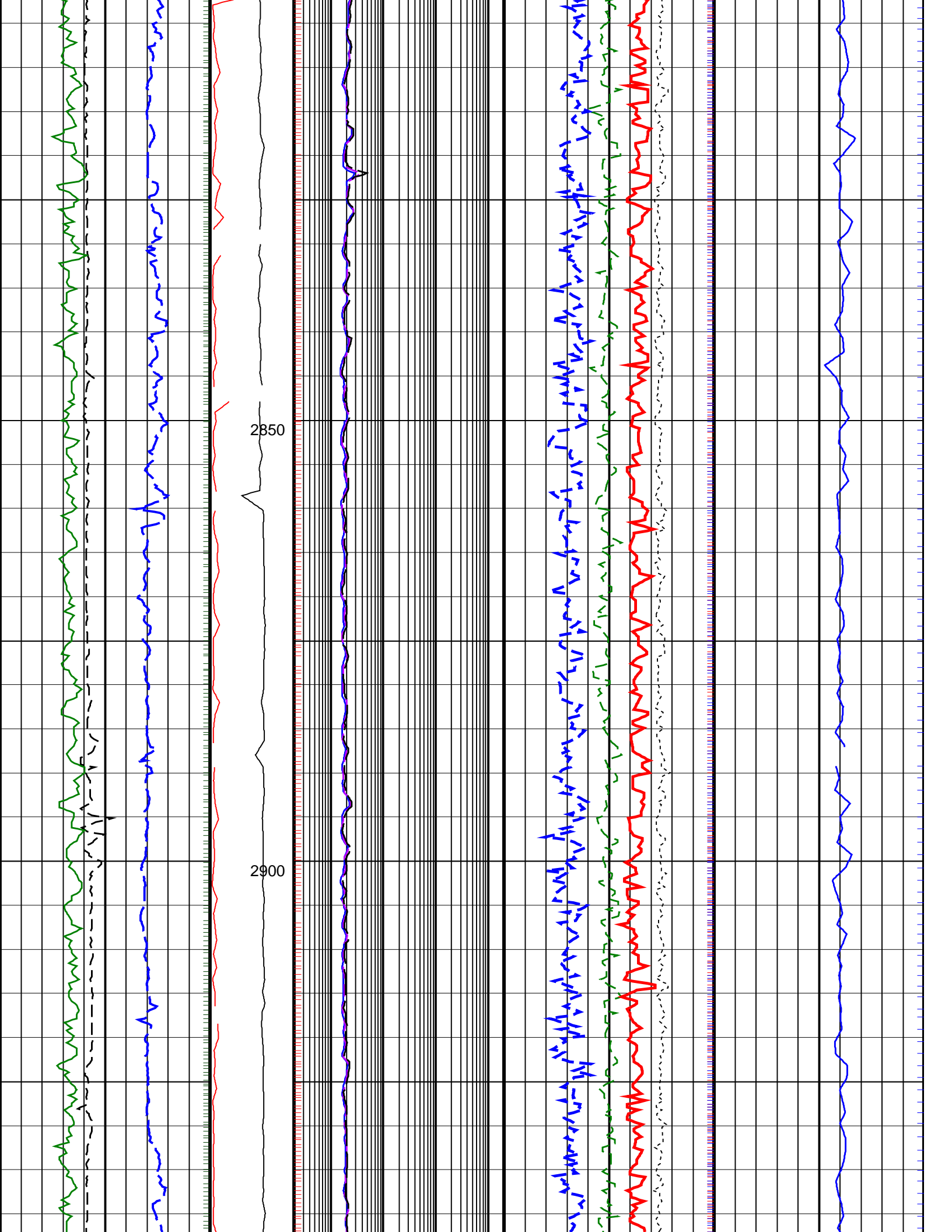


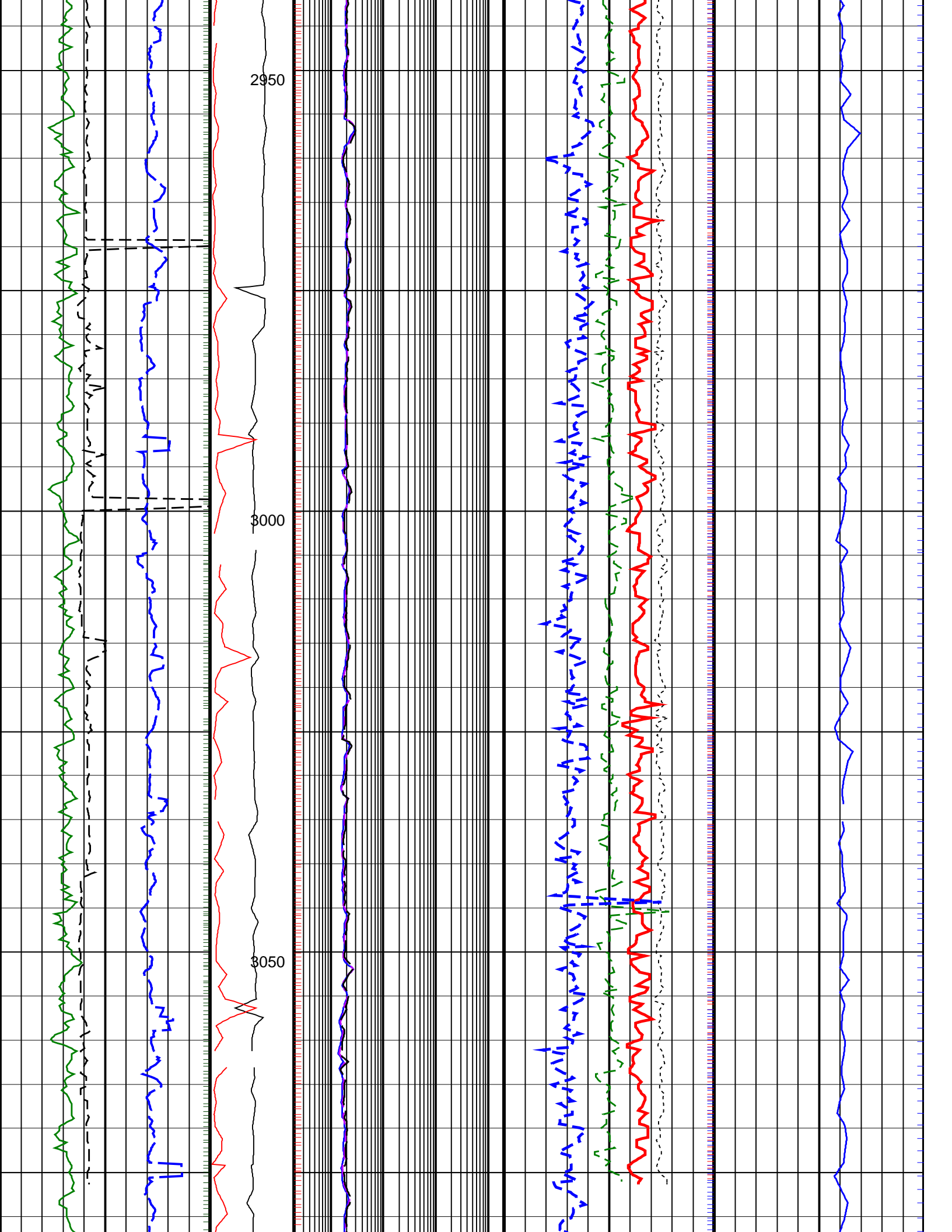


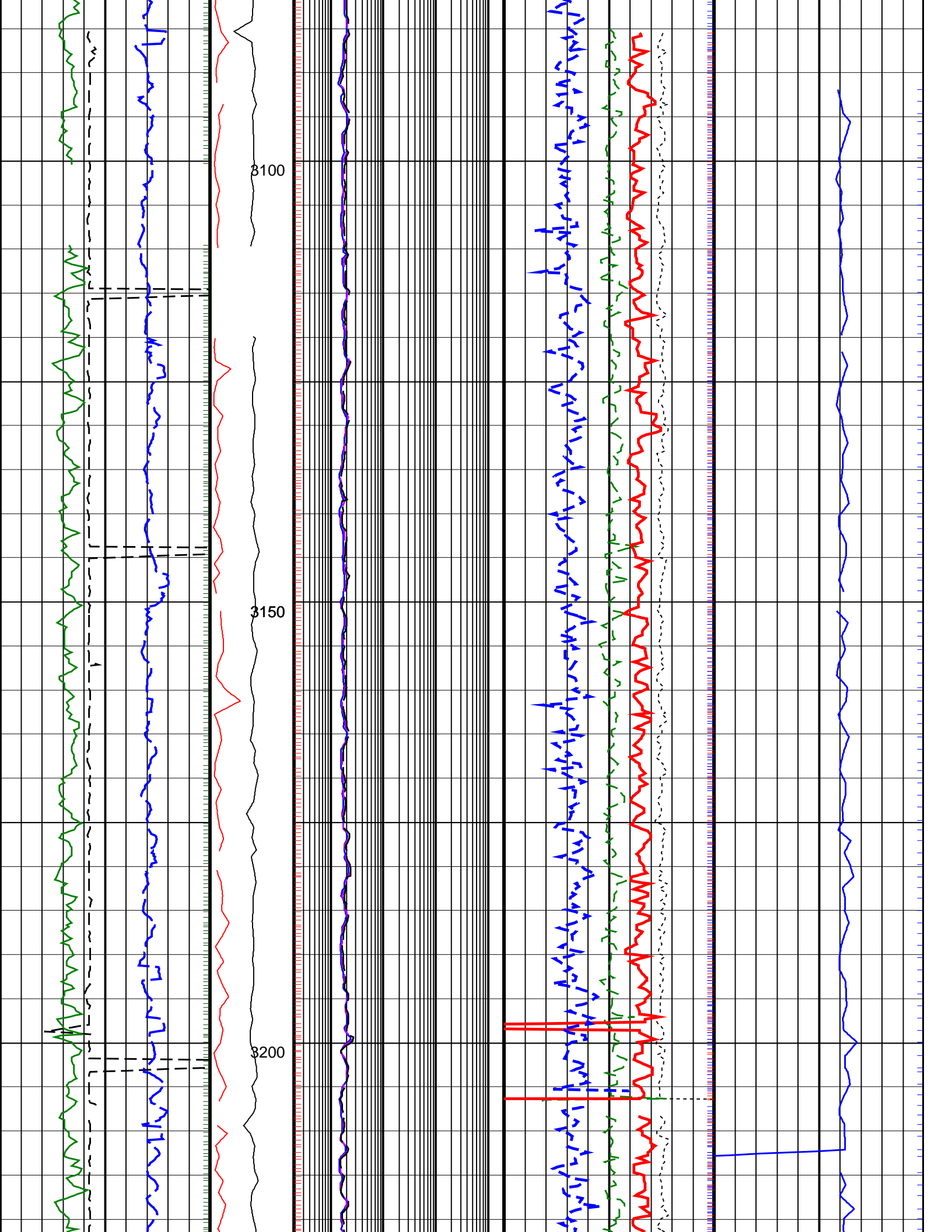


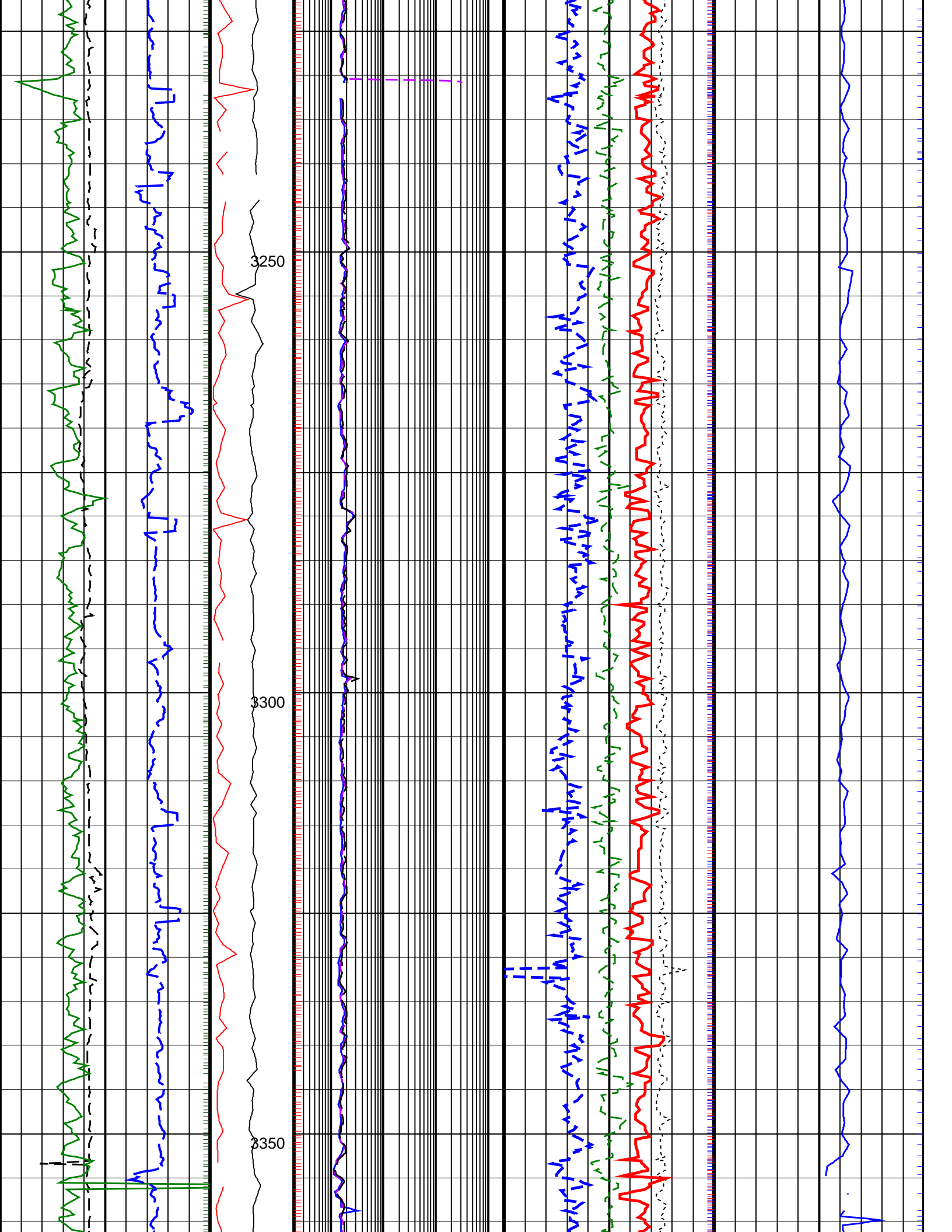


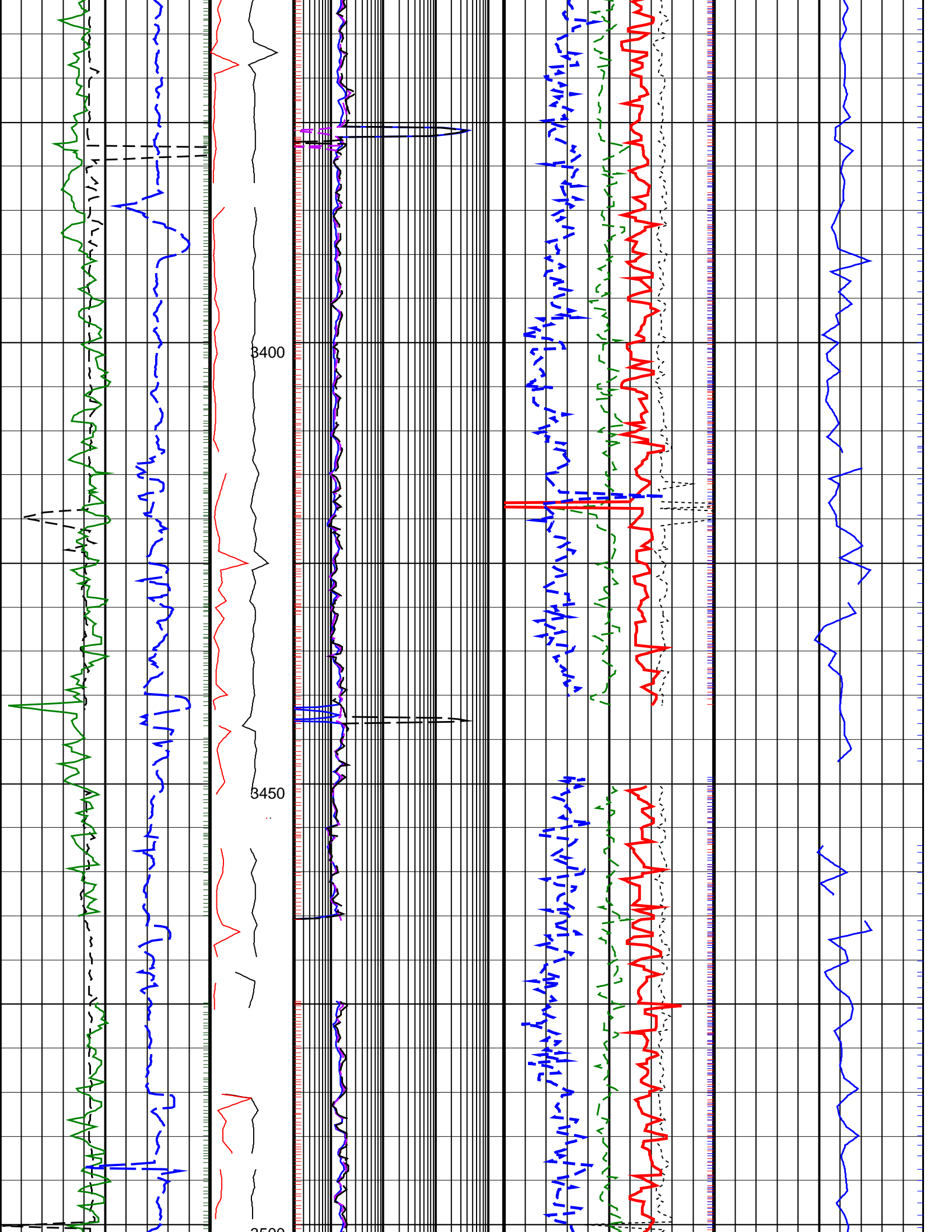


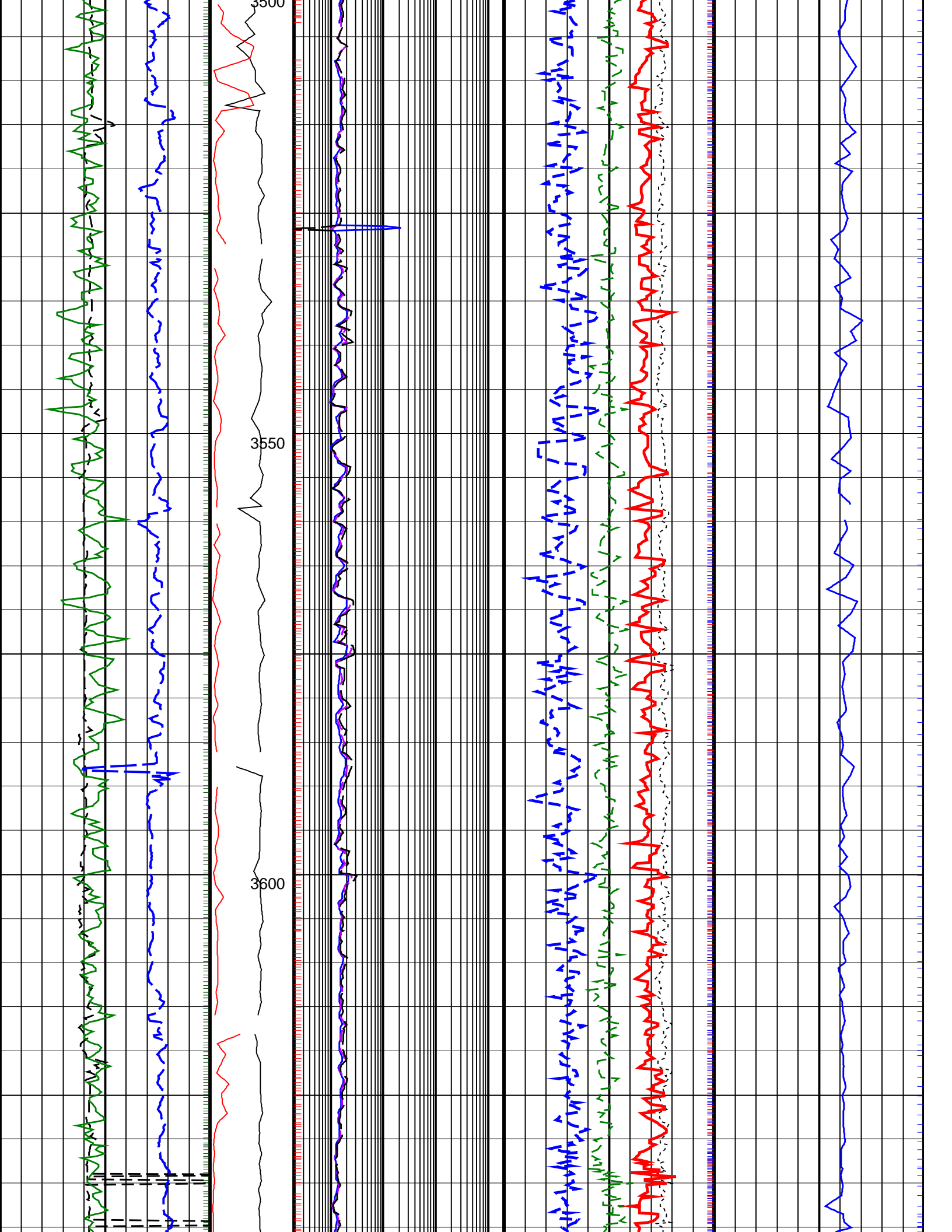


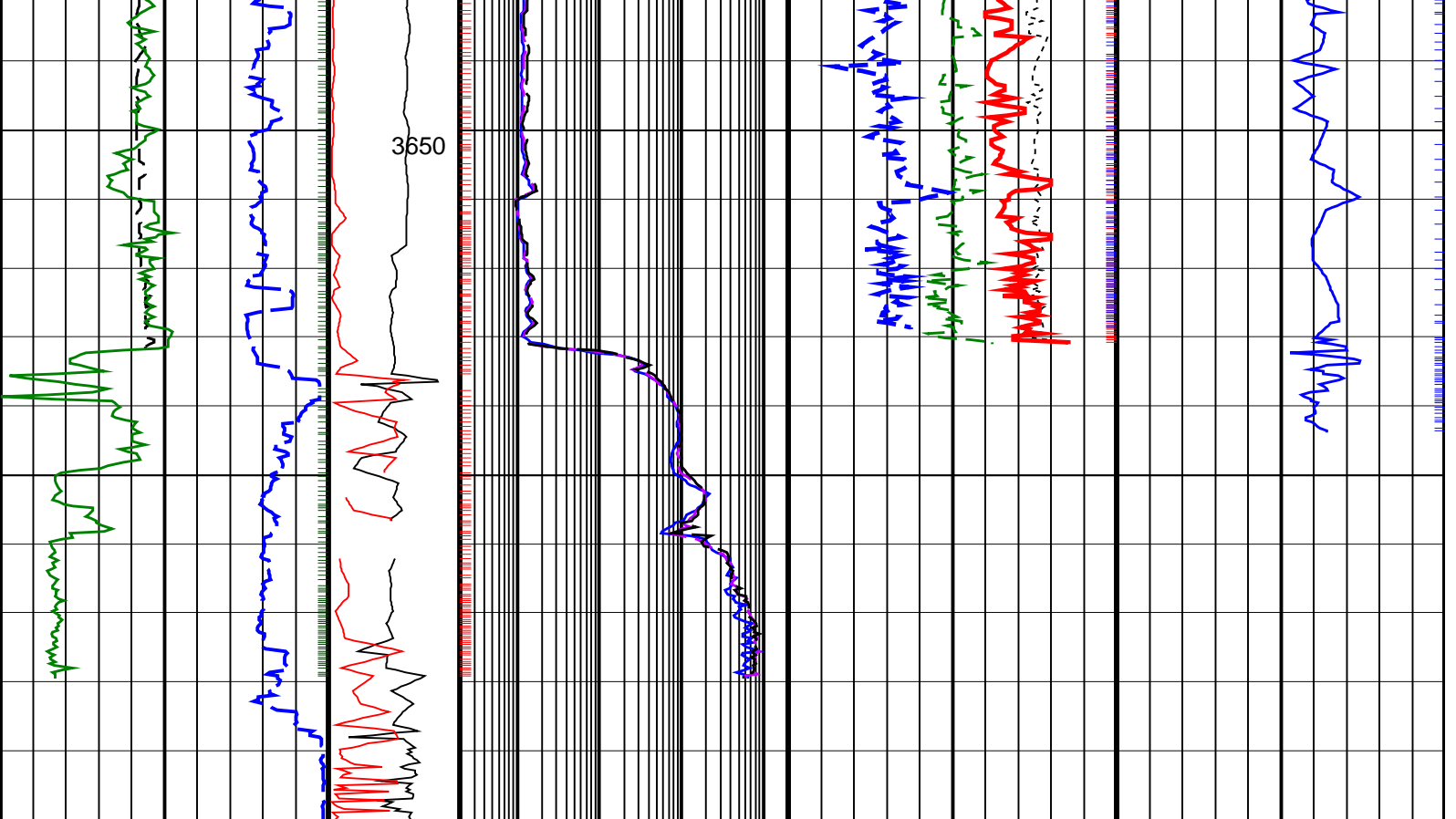












<u>ROP*5 (ROP5)</u> 200 (M/HR) 0	PKPK_RPM (Stick_RT) (RPM) 0 500	ARC BHCORR Phase-Shift Resistivity 16-in. at 2 MHz, Real-Time (P16H_RT) 0.2 (OHMM) 2000	Bulk Density Correction, Bottom, Real-Time Computed Downhole (DRHB_DH_RT) -0.75 (G/C3) 0.25	Delta-T Compressional, Real-Time (DTCO_RT) 600 (US/M) 100
Average Borehole Diameter, Real-Time (ADIA_ADN_RT) 6 (IN) 16	MWD Collar RPM (CRPM_RT) (RPM) 0 250	ARC BHCORR Phase-Shift Resistivity 28-in. at 2 MHz, Real-Time (P28H_RT) 0.2 (OHMM) 2000	Photoelectric Factor, Bottom, Real-Time (PEB_RT) 0 (----) 10	
ARC Gamma Ray, Real-Time (ARC_GR_RT) 0 (GAPI) 200		ARC BHCORR Phase-Shift Resistivity 40-in. at 2 MHz, Real-Time (P40H_RT) 0.2 (OHMM) 2000	Bulk Density, Bottom, Real-Time Computed Downhole (ROBB_DH_RT) 1.85 (G/C3) 2.85	
			Thermal Neutron Porosity, Real-Time (TNPH_ADN_RT) 45 (PU) -15	

PIP SUMMARY

┆ ARC GRAPP PIP

┆ IMP RP16 PIP

Delta-T Compressional, Real-Time ┆

ROBB_A PIP ┆
 TNPH_TA PIP ┆

IDEAL Version: ID14_0C_07
 IDF